

HOME & DESIGN A TIMES OF INDIA PUBLICATION

TRENDS

VOLUME 5 NO 7 ₹250



ABDUL HAMEED
ARCHIS PATEL
BHAYANA HAMEED
BJARKE INGELS
DHAVAL SHELLUGAR
DIPEN GADA
FARAH AHMED
FERNANDO ABELLANAS
HARSH PATEL
KAVAN SHAH
MANISH DIKSHIT
NEHA SINHA
RAJESH PATEL
RAJIV PAREKH
SANCHIT ARORA
SUBHASH LAL
TANVI RAJPUROHIT
AND MORE...

Ayaz Basrai

THE KING OF COOL DESIGN

RNLI MAHENG/2013/50949



MW88171201

ARCHITECTURE

RESIDENTIAL
Homes that craft a contemporary identity through their design

PROJECT: BUNGALOW ▾ ARCHITECT: DIPEN GADA ASSOCIATES ▾ INTERIOR DESIGNER: A+T ASSOCIATES

TEXT: TINA THAKRAR
IMAGES: TEJAS SHAH



Additional Info

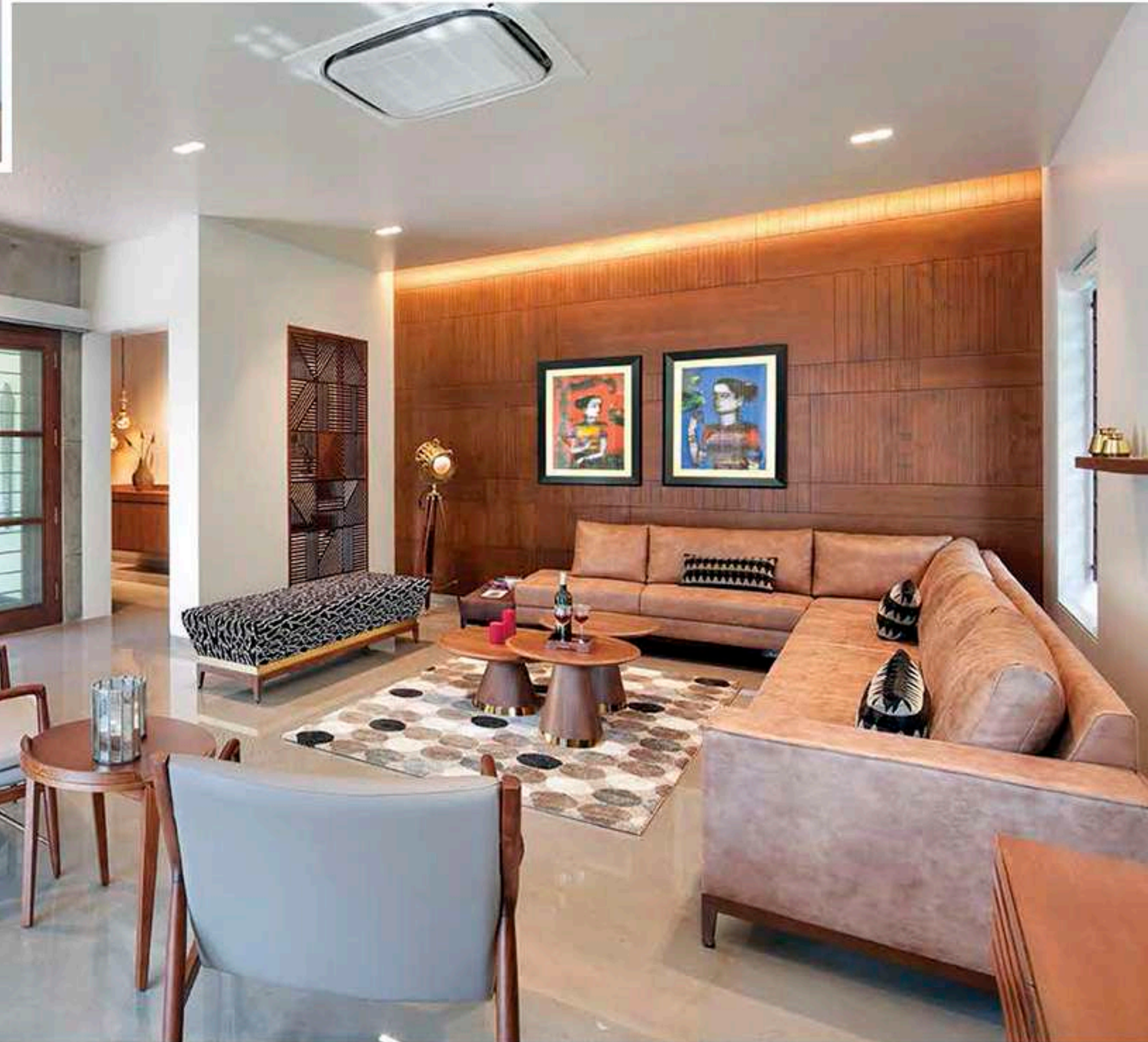
- AREA: 5,000SQFT
- LOCATION: VADODARA

Heroing concrete and wood as materials, this minimalistic family home effectively blends the indoors and outdoors.



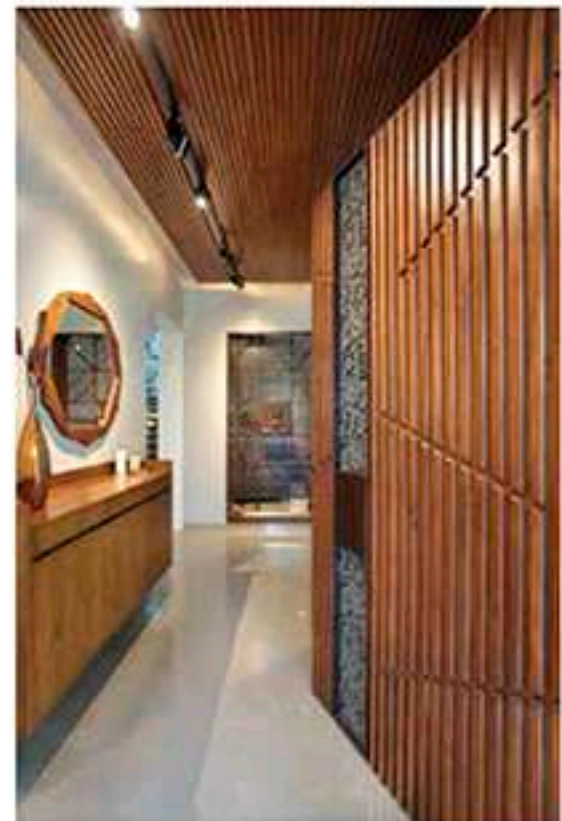
“
The family wanted a simple, spacious home that gave them space to breathe. They were seeking a peaceful oasis, removed from the stresses of life, but without excess beautification.

— Tanvi Rajpurohit, Principal Designer, A+T Associates



Effortless human circulation, sound functionality, balanced lighting and aeration — the elements of this family dwelling by architect Dipen Gada and interior designers Archis Patel and Tanvi Rajpurohit focus on basic livelihood with just a hint of adornment. In terms of both design and lifestyle, minimalism was key. Standing on what used to be an empty plot, the two-storey home is bold on the outside, contemporary on the inside and boasts of a peaceful environment that is devoid of harsh elements. Public and private spaces cover both levels, connected by an elemental, towering staircase.

An exposed concrete façade upholds the monolithic structure, with concrete being one of the most used materials in the home, besides wood. Treated as an artistic element, the concrete has been given playful grooves on the outside, to let a controlled amount of natural light into the interiors. Inside, the façade acts as a wall for certain rooms, a lotus wall mural in the living room, and a support structure for the staircase. All the other materials used in the house either complement the concrete or comfortably contrast with it. Even the colour palette remains neutral, with pops of occasional colour to create eye-catching corners.

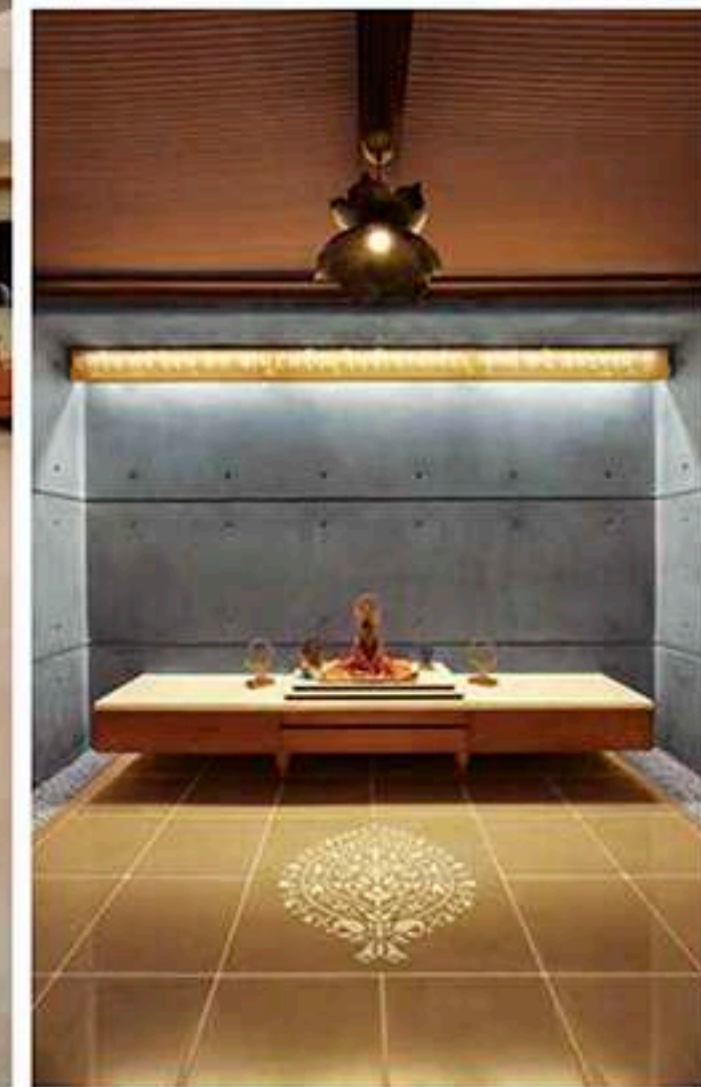




FYI
 The wall art resembles a dry tree trunk with one blooming copper flower in the centre. The lotus is fixed with a back light.



“
 The exposed concrete of the façade is part of the living room and home theatre room as well. The inside and outside are balanced with the same language of architecture.
 – Dipen Gada, Principal Architect, Dipen Gada & Associates



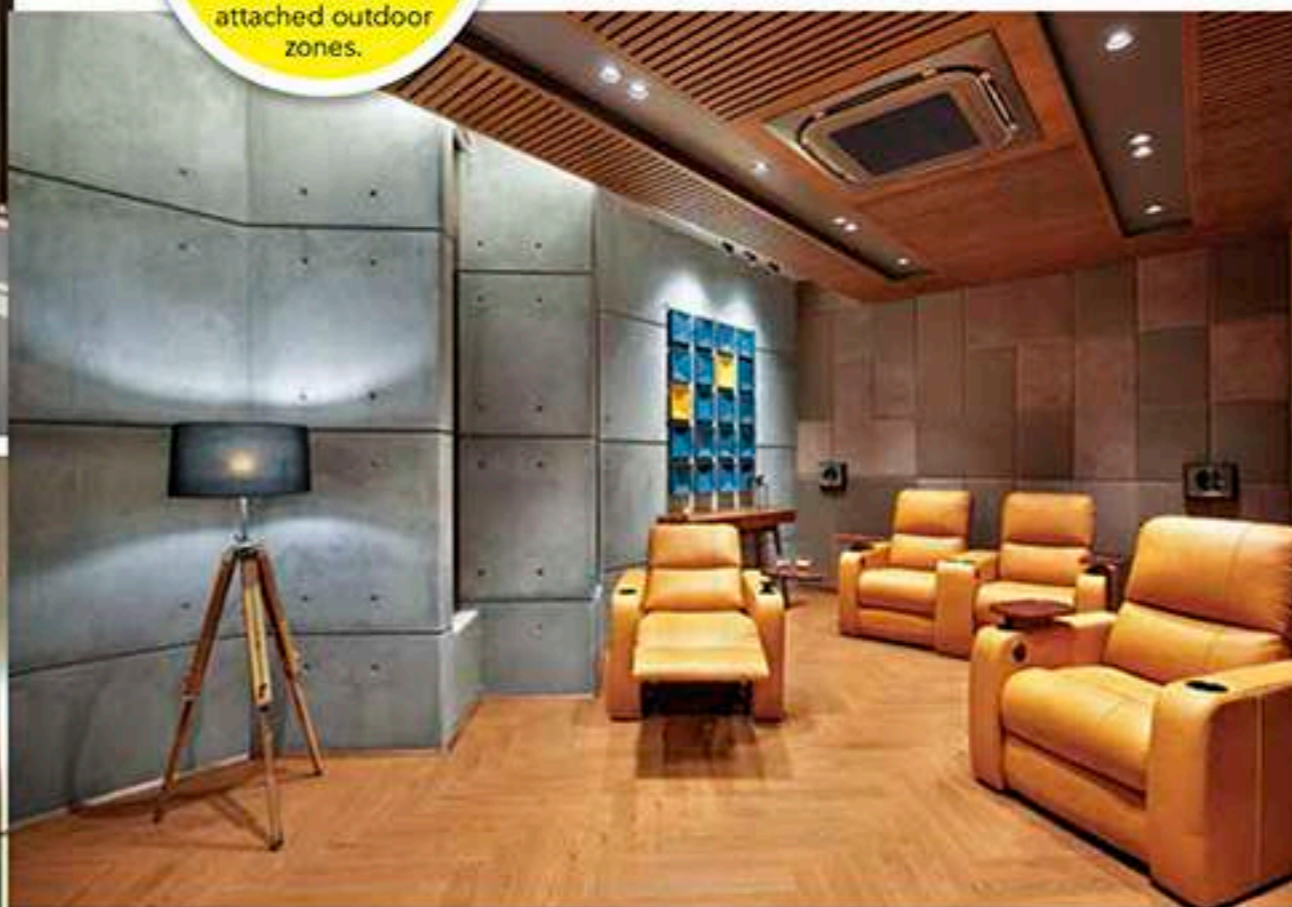
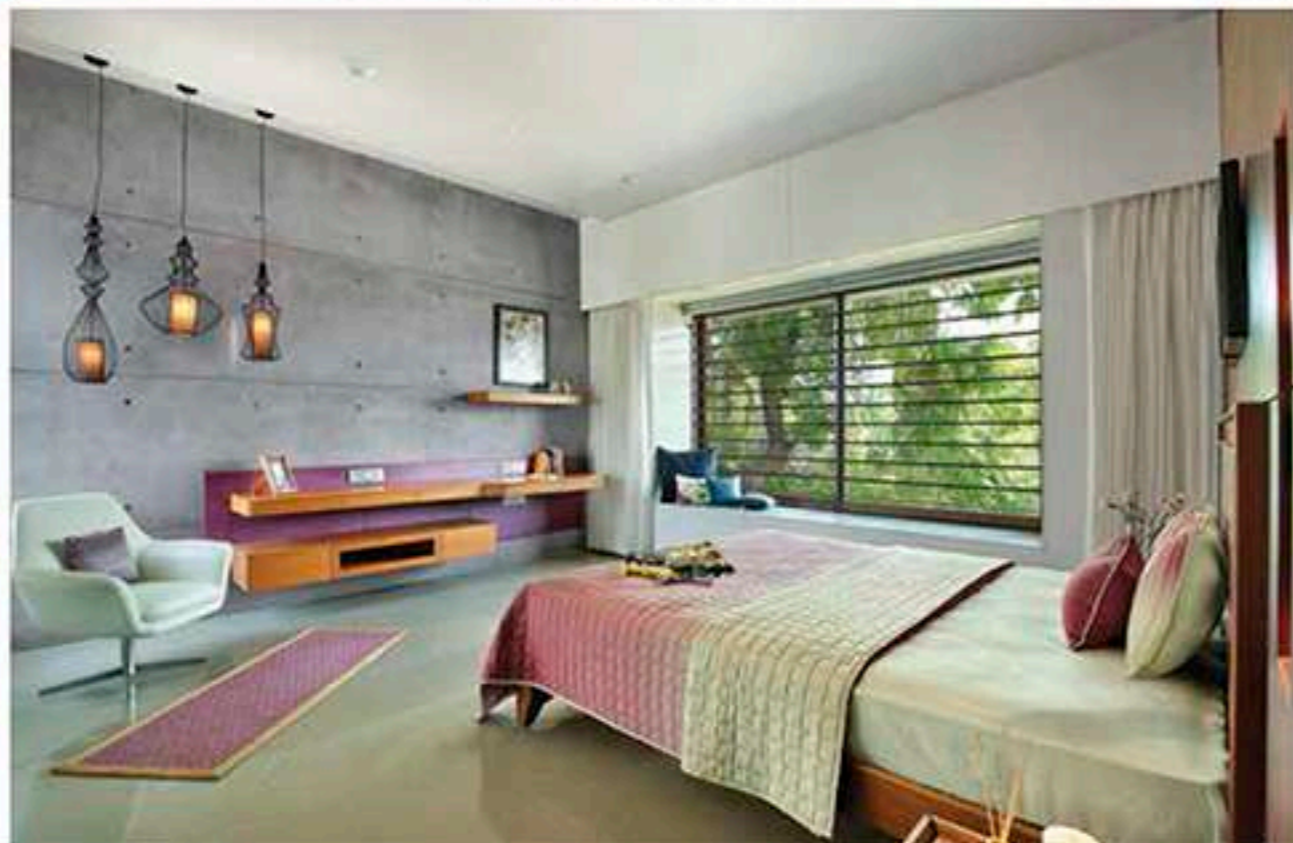
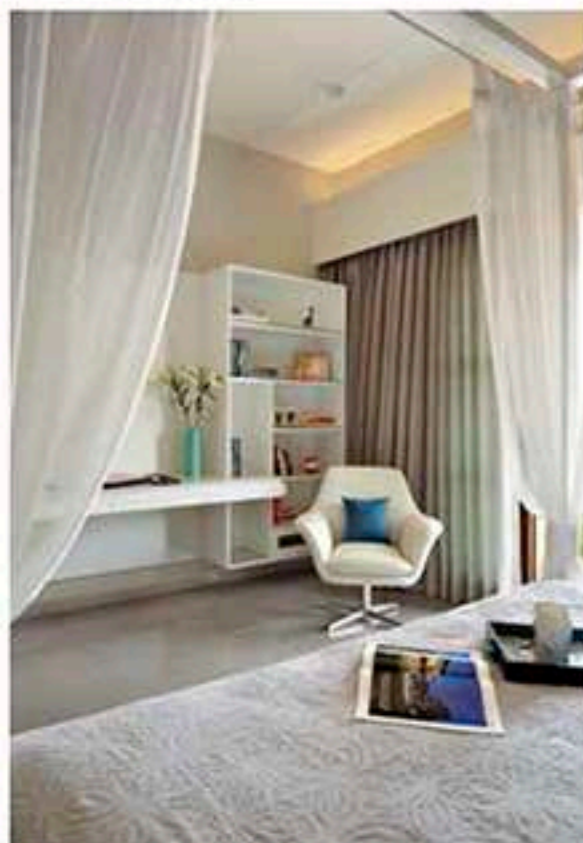
The entrance corridor breaks into public spaces on the right and left — a family lounge that opens into a balcony and a formal living room connected to the dining and kitchen areas. While the former is a sober space in neutral shades, the latter is rich, stylish and detailed with fabric finishes. One bedroom and a puja room comprise the rest of the ground level. The remaining three bedrooms and the home theatre room sit on the first floor.

For every room, local materials and accessories were brought in to root the house in its locality. The furniture also features a mix of pieces bought from Vadodara and customised on site. For every single element, the two teams worked in tandem with each other to give the home a harmonious setting.

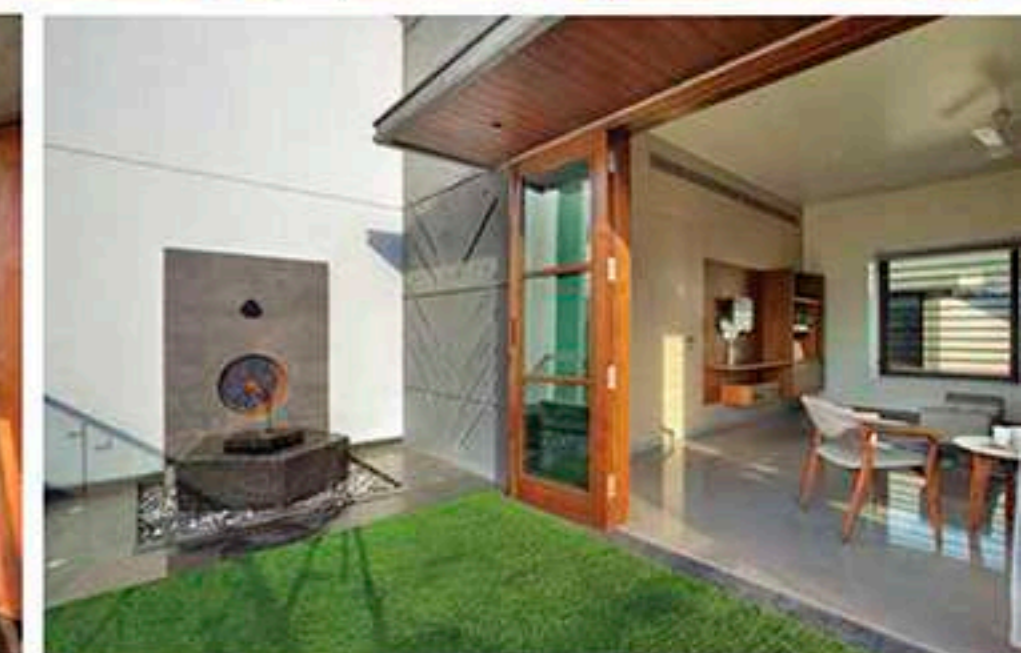


FYI
Due to plot constraints, landscaping was kept to a minimum. However, some rooms have attached outdoor zones.

The home theatre room was designed around the concept of acoustics. Since one of the walls was concrete, which reflects sound, the design team had to use more fabric and acoustic material to absorb sound. A perforated wooden ceiling was designed with a hidden, synthetic fibre wool layer for this purpose.



Throughout the home, grey Italian marble covers the floor, except the home theatre room, which has a wooden floor. The wall panelling differs from room to room.



THE SPECS
Architect: Dipen Gadia, Dipen Gadia Associates
Interior Designers: Archis Patel and Tanvi Rajpurohit, A+T Associates
Roof and windows: Hi-Tech Aluminiums
Tiling and flooring: Jain Granite & Marble
Paints: Asian Paints
Bath fittings: Duravit, Deco Art

“The house was designed such that there is ample natural light. We wanted to give it an inside-out feel, with the interiors connecting to its body.”

— Archis Patel, Principal Designer, A+T Associates