



# Charismatic ABODE

THIS SUMPTUOUS BUNGALOW  
DESIGNED BY **A+T ASSOCIATES**  
MAINTAINS A FLOW OF  
CONNECTIVITY ALONG WITH  
TRADITIONAL AESTHETICS.

**Text:** Saburi Vikanar **Photographs:** Tejas Shah

**D**esigning a bungalow on a small plot is a big challenge that needs a lot of precise detailing and it should also fulfil the client's expectations. This was the challenge **A+T Associates'** principle designers **Ar. Tanvi Rajpurohit** and **Archis Patel**, took while designing this meticulous bungalow on 2,500 sq. ft. area for their client **Jeel Shah** and his family in Vadodara, Gujarat.

Though the plot size was small, the client wanted a spacious bungalow with inter-connected spaces on the interior. On the interior, the home is well-connected with all the public spaces with no partitions to stay connected to each other.



**1**  
Simple yet elegant living and dining room, the mosaic adds serene vibes to the entrance foyer.

**2**  
The door handle and low-height partition with abstract form at the entrance are notable features.

**3**  
Ample of daylight passing through the windows makes the room well-lit.





Speaking about the concept of the house the architects says, "Before designing the project, we always study the lifestyle of the people, who are going to stay in it. The owners of this home have a very simple lifestyle and are religious and hence, the architecture is inspired by simple and clean cubic forms without any structures." The living room and the bedrooms have off-centered metal art that keeps the windows hidden.

The architecture is designed keeping in mind the climatic condition of Gujarat. One of the sides is designed in solid form, in order to prevent heat in day time and also to keep the interior of the house cool. Doors and windows all over the house are placed to give relief during the summer.





Coming to the interiors, one can feel the contemporary style of the house, which is refreshing. The locally sourced materials along with neutral colour palette with some of the corners being coloured in pop-up colours lend a dramatic touch to this space. The ground floor is all done in Green Kota stone and adding style are the wooden, veneer, cement and stone furniture.

At the entrance, a low-height cement sheet partition along with an abstract modern art work forms a cosy backdrop for this area. Giving a divine touch is the mandir, in between foyer and dining area that is done up in all wood and has a painted Kalpavriksha tree, which was hand-painted by local artists.

The living area is simple yet sophisticated with some elementary details and colourful fabrics. The mustard coloured upholstered sofa and brightly coloured cushions accentuate the living room. The indirect entry partition also acts as a TV unit. The polished Kota stone flooring gives a mirror like finish. Keeping the theme of the house in mind, The furniture is designed using natural solid wood.

The kitchen functional yet classy has a quartz marble clad and custom-designed cabinets. The clean look of the kitchen is added by the rectangular windows which flows in light.

The MS fabricated staircase not just connects the different levels, but aesthetically enhances the end space.

The elegant master bedroom minimal in its décor has its own charm with cement plaster along with groove pattern on the walls, lending a unique identity to this space. The teakwood furniture lends its own charms to the space.



7  
The first floor passage area is aesthetically designed.

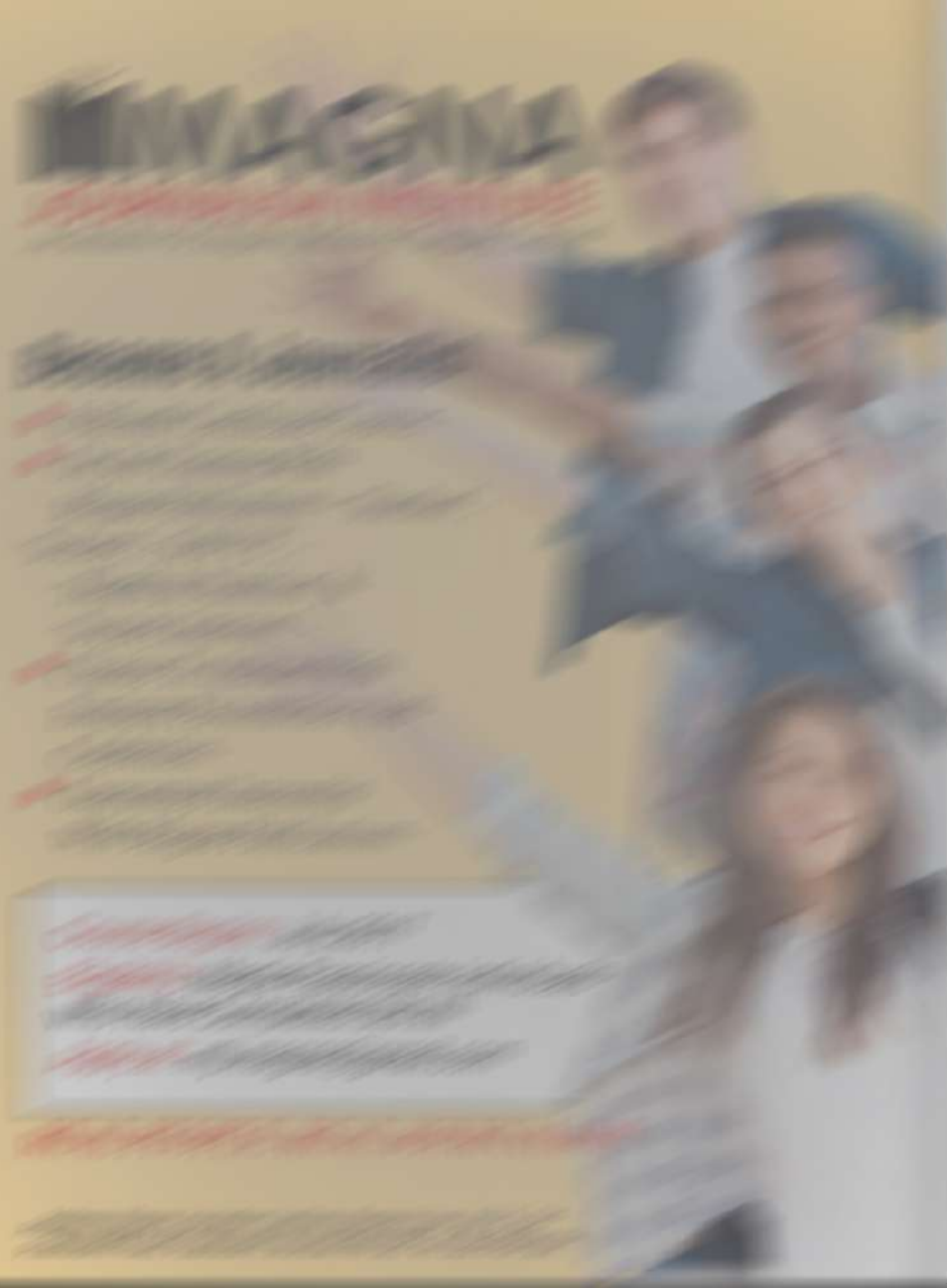
8  
Kids bedroom has hues of blue and grey.

9  
The terrace has a peaceful ambience with a wooden sit-out place.

10  
Notable wall drawing on the wall leading to upper floors

11  
The neat and clean kitchen area.





12  
The common toilet features copper basin and brass faucet, lending old-world charm.



13  
Aesthetically designed parents bathroom.



14  
Note the exterior view of the bungalow.

The bedroom has attached walk-in closet and bathroom, designed in complete Italian stone cladding, wooden ceiling and intricate metal framed mirror along with hangings.

The parents' bedroom has a complete different look with the interiors having neutral tones, minimal patterns and material palette. The room features low-height bed with elegant hanging light. The seating arrangement gives depth to the room along with Madhubani paintings. The parent's bathroom has a marble-clad basin with wooden cabinets and a rectangular mirror.

The five-year-old son's room has been designed as per the young boy's preference. In this room one admires the use of deep blue, grey and brown colours. The wall behind the bed has five frames that show his growing age and fun moments from his small journey.

Overall, one admires the efforts of both the designers who have put in lot of efforts in detailing each and every space, which has resulted into a simple yet classy home. ■

#### CONTACT DETAILS

at1 associates  
201, Yogi Akshar Apartment  
Productivity Road, Nr. Akota Garden  
Nr. Doodh Colony, Akota 390020  
Vadodra  
(0265) 2537444  
9427292234  
www.apk1associates.com  
at1associates\_05@gmail.com