

OF WOOD AND BRICK

Using a vocabulary which is neither starkly contemporary nor harking back to the past, a+u associates have designed a hangout in Mahabaleshwar spread across four levels, wrapping public and private spaces in a comfortable embrace.

A preference for wood, brick and an earthy feel was part of the brief given by the client. "Moreover, he already had a large stock of wood to be used on the site, so that more or less defined our design," says Taru Rajan of a+u associates.

"The name of the hangout, 'M'ya', displayed at the entrance, has been loaned out from a floor which we sketched," discusses Archa Patel, also of a+u associates. A living area sits further within. The site was a bare, concrete-lined shell with thick external walls, all of which were demolished, so as to reallocate spaces according to the specific needs of the family. Some changes were made to the external architecture as well. The ground floor consists of parking, a utility space for the kitchen, accommodation for the household help and a lift which goes all the way up to the third floor.

Set By Deepans Jaisankar
Photographs Tejas Shah

The first floor consists of living and dining areas, together with the kitchen, which is well protected from the outside world. The dining table is set with a mix of wood and metal, and the chairs are made of wood and metal. The living area is a mix of wood and metal, and the chairs are made of wood and metal.



The design fosters togetherness by bringing people together and giving them places to interact on each floor of the bungalow, without compromising privacy. Not 'over designed', or intimidating, this home has provided a relaxed ambience for the family.

☎ atassociates.05@gmail.com

SUB

MA

No. of Issues
36 + 8 Free
24 + 4 Free
12

I am enclosing a
 favouring "Marv
YOUR DETAILS
 Mr/Mrs/Ms/Ms.
 Address _____
 City _____
 Phone _____

THE FACE BACK DESI



Connected with the pool terrace garden. Parking the interior, using the stone increases the site, from the large windows and garden, height of natural lightness, the terrace. The handrails on the wall are Kallitris people, marble hand painted with black and gold lacquer.

The first floor consists of the living and dining room together with the terrace garden and kitchen as one contiguous space. The parent's bedroom, powder room, kids room and storage are on one level low. The entry colour palette has shades of rust and brown, original natural wood, coloured bricks and similar tones in metals such as brass and copper.

The large handle at the main floor has been custom cast from a sheet of brass. From the entrance, a 30 ft high exposed brick wall extending to the top floor is visible, with a back EM copper art installation of letters, the pipes from the AC ducting being used for the stems of the flowers.

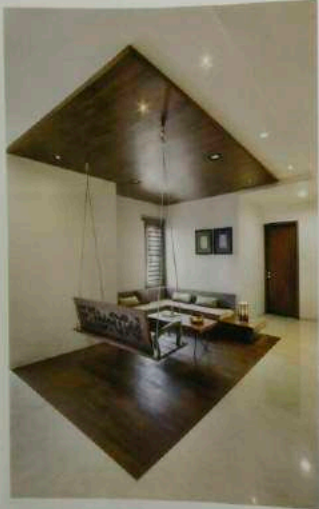
The staircase has been designed with solid wood and MS. "The detailing in the brass where a lip of wood joins upwards to meet the rise, has been designed by us," says Jariel.

A waterbody surrounds the terrace built. Floating flowers and has been casted from the left over wood on the site. The large central light fixture (measuring 7 ft x 2 ft x 3 ft inches) is assembled in the studio has been fabricated from a copper sheet with cut-outs in the shape of leaves, the petals folded inward to let the light glimmer through the aperture.

Closer to the main door, a portion of wooden 'bricks' systems all the long area, individually put together, they form a path through which the light casts an interesting pattern after sunset. All the furniture has been customised in solid wood in jachpan, while the polished Acacia for stairs. Flooring in all areas ensure a seamless connectivity.

The terrace garden is an extension of the living space and is visually connected with the interior. The dining area is located between the kitchen and living area, with Italian marble cast on one wall. Custom designed cabinetry adds character to the space.





The second floor consists of a family zone with a living, the master bedroom, the daughter's bedroom and a guest bedroom, all with walk-in closets. In the main bathroom, the bathtub is placed adjacent to a large glass partition.

"Covered with a clear coat of PU, it is protected from corrosion," says Aydin. The wall behind is painted with a color which the shades of the wardrobe are covered, creating a warm cozy feel to the room. The washing machine is placed in the corner of the room.

In the daughter's room, the wall behind the headboard is the focus of attention, with a display of art-embroidered cushions. Mounted in a smaller scale. Made of different woods, such as wenge, oak and oak, they give the feel of old doors. Across the bed, a delicate ceiling of the daughter's room, her growth from childhood to high school, leaving memories it depicts the journey of her life.

The third floor has an informal living area which includes a small study. Connected with the two terraces garden. Parked in the space, the room maximizes the view from the large windows and creates another natural light into the interior. The board's plates on the wall are Kashi's paper mache, hand painted with color and gold powder.

The main theme walks through the corridor is a hallway, starting from the hands of the next door, to the large sculpture on the wall near the staircase and apartment in the puncture in the large rectangular hall integrated in the staircase.

The staircase unites the floor in four ways than one, with the design of its steps making a strong visual statement. Large red patterns have also found space on various surfaces.



Below master bedroom, the bed behind the bed is covered with cushions that are all covered the wall behind the headboard, displaying a warm cozy feel to the room. The washing machine is placed in the corner of the room.



In the daughter's room, the wall behind the headboard is the focus of attention, with a display of art-embroidered cushions, hand painted with color and gold powder.