

NOVEMBER 2018 ₹ 200

# ARCHITECTURE+DESIGN

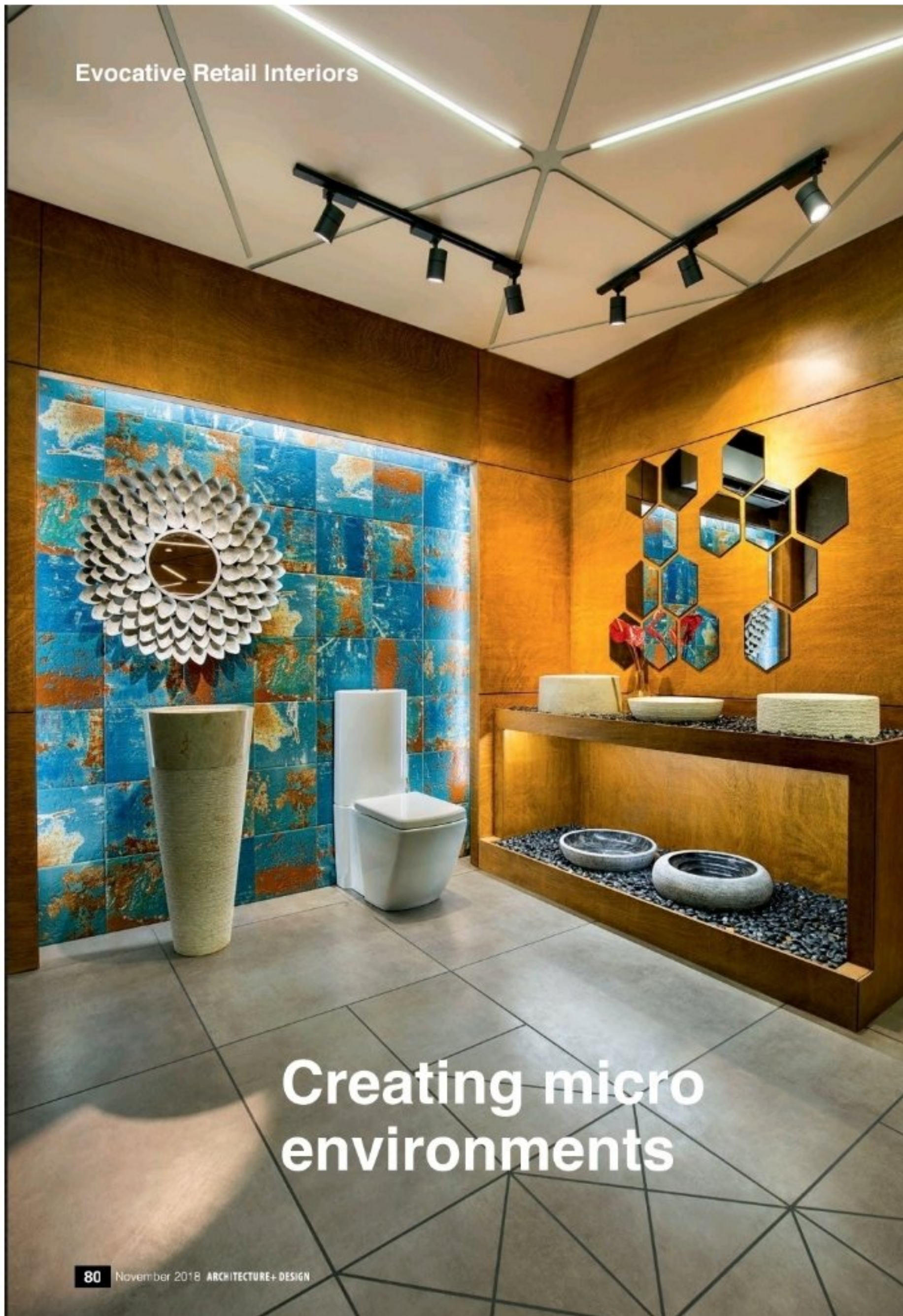
A N I N D I A N J O U R N A L O F A R C H I T E C T U R E



- **Evocative Retail Spaces**
- **stories from my journey**  
– christopher benninger



Evocative Retail Interiors



Creating micro  
environments





Archis Patel

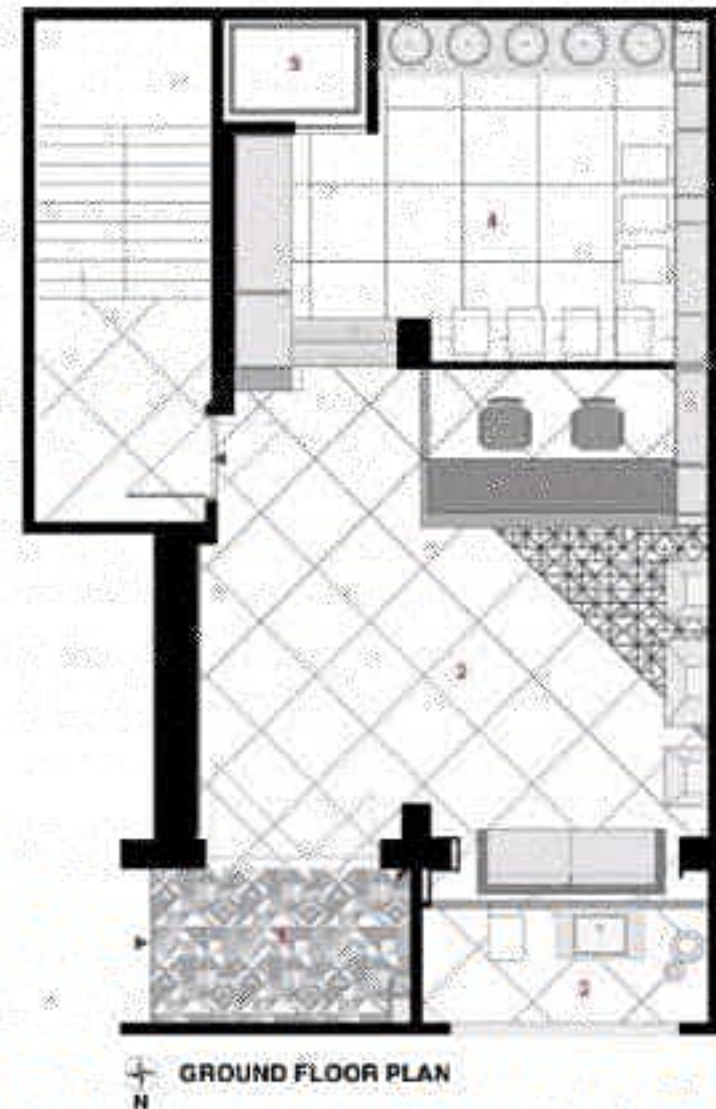


Tanvi Rajpurohit

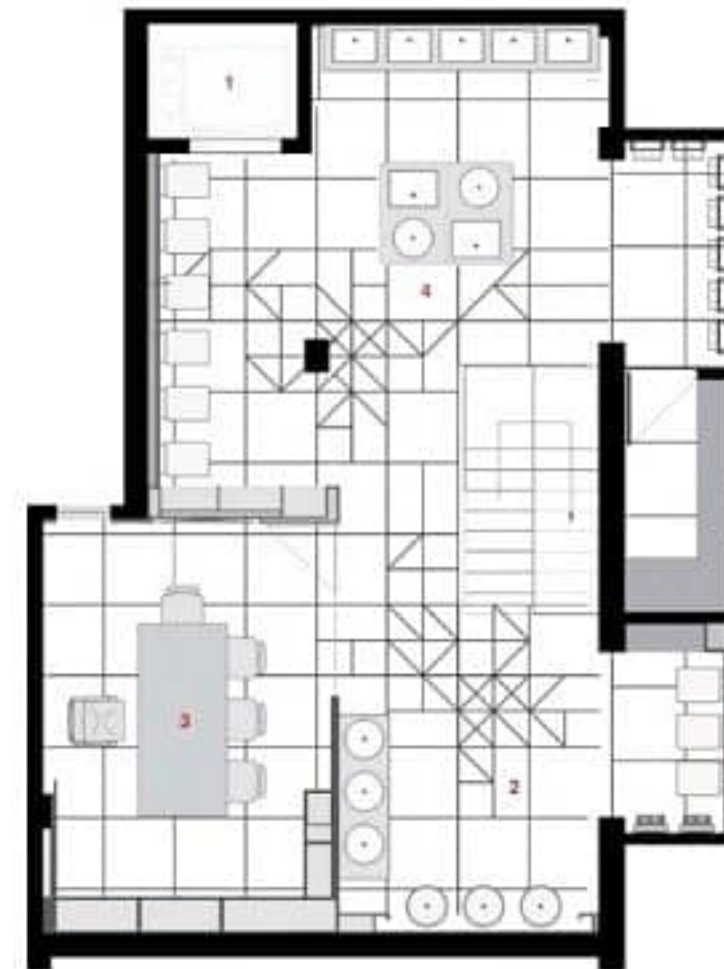
1. FOYER
2. RECEPTION AND WAITING AREA
3. DISPLAY AREA - 1
4. DISPLAY AREA - 2
5. LIFT

**Project:** Ceramic Shoppe, Vadodara  
**Architects:** a+t Associates, Vadodara

The project is a multistory tile and sanitary ware showroom which covers an area of about 3500sq ft; each floor is dedicated to a particular company and their products. Since the showroom is located in an old building, the most difficult yet intriguing part for the designers was to connect all the floors otherwise disconnected. The problem was rectified when an unused pocket of the building was found at the back side, where the lift was accommodated.







THIRD FLOOR PLAN

1. MEETING ROOM
2. DISPLAY AREA - 6
3. DISPLAY AREA - 7
4. STORAGE AREA